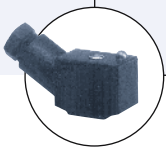
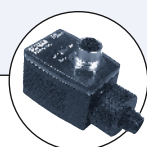


Type 6642 can be combined with...



**Type 2506**

Cable plug

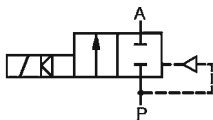


**Type 2510**

ASI Cable plug

Type 6642 is a servo-assisted solenoid valve with a servo-diaphragm and a plastic body. A minimum differential pressure of 0.5 bar is required for full opening and closing. The valve can be removed from pipework.

#### Circuit function A



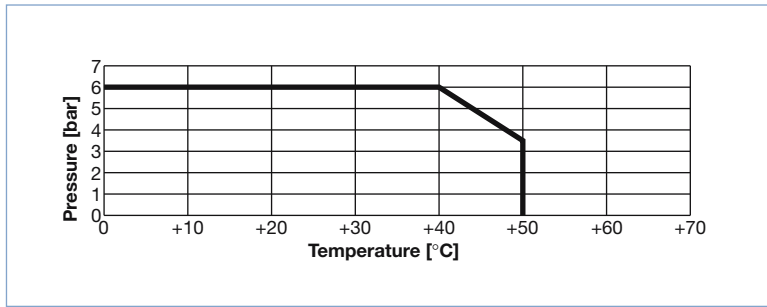
2/2-way flow valve, normally closed, with 3 way rocker solenoid pilot valve

## 2/2-way Solenoid Valve, servo-assisted

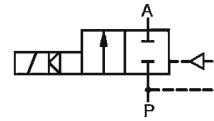
- Medium separated from the actuator system
- For aggressive fluids
- True union and threaded connection
- Can be mounted or removed radially for space-saving installation
- Low power consumption

Technical data		
<b>Orifice</b>	DN 10 and 13 mm	
<b>Body material</b>	PVC	
<b>Body cap</b>	PVC	
<b>Pilot valve flange</b>	PEEK	
<b>Valve internal parts</b>	PVDF	
<b>Seal material</b>	FKM, EPDM	
<b>Media FKM</b>	Neutral media, oxidizing acid, salt solution, oil with additives	All kinds of fluids which don't attack the materials in contact with the media
<b>Media EPDM</b>	Acid to medium concentration, alkaline media	
<b>Temperature media</b>	See Pressure-temperature chart	
FKM	0 to +50 °C	
EPDM	0 to +50 °C	
<b>Ambient temperature</b>	0 to +40 °C	
<b>Operating voltage</b>	24 V/DC (3.4 W) for 24 VAC, use cable plug with rectifier 230-240 V/UC (4 W)	
<b>Voltage tolerance</b>	±10%	
<b>Duty cycle</b>	100% continuous rating	
<b>Electrical connection</b>	Tag connector acc. to DIN EN 175301-803 Form C (previously DIN 43650)	Tag connector sideways at 24 V DC Tag connector above at 110/230 V/UC
<b>Cable plugs</b>	Acc. to DIN EN 175301-803 Form C (previously DIN 43650) for cable plugs type 2506 or type 2510 (see Accessories)	
<b>Protection class</b>	IP 65 with cable plug	
<b>Installation</b>	As required, preferably with actuator in upright position	
<b>Power consumption</b>	Inrush and hold	DC 3.4 W and UC 4 W
<b>Response times</b>	Opening [ms]	200 - 400
	Closing [ms]	400 - 600

Pressure-temperature chart PVC



Circuit Function A



2/2-way valve, normally closed by spring action

Materials

1	Valve body	PVC
2	O-rings	FKM or EPDM
3	Diaphragm support and holder	PVDF
4	Cover	PVC
5	Coil	EPOXY
6	Diaphragm	FKM or EPDM
7	Pilot valve flange	PEEK
8	Pilot valve body	PPS
9	Isolating plate	Stainless steel 1.4310

Fluid connections have to be ordered separate (see accessories ordering chart)

Ordering chart (other versions on request)

All valves with PVC body material, without cable plug and without connection set.

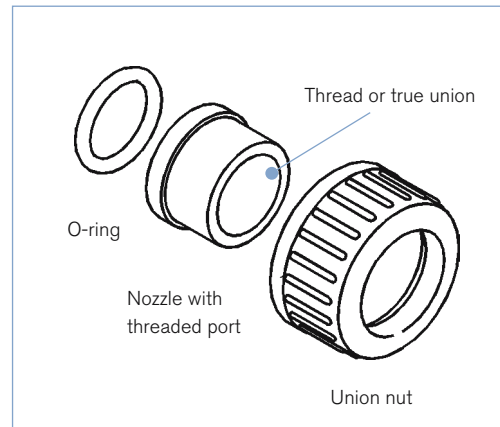
**Note:** the connection set is not supplied as standard, please order separately.

Circuit function	Orifice [mm]	Kv vav/ve water [m³/h]	Pressure range [bar]	Weight [kg]	Seal material	Voltage/ Frequency [V/Hz]	Item no.
A	10	1.8	0.5 - 6	0.15	EPDM	024/DC	142 165
						230-240/UC	142 167
					FKM	024/DC	142 171
						230-240/UC	142 173
	13	4.0	0.5 - 6	0.20	EPDM	024/DC	142 177
						230-240/UC	142 179
FKM	024/DC	142 183					
	230-240/UC	142 185					

All coils for 230-240 have an integrated rectifier and a varistor. They are therefore suitable for use with both DC and AC supplies. A connector without an integrated circuit is recommended for the electrical connection. (110-120-V-Versions on request)

## Ordering chart for accessories

Orifice [mm]	Port connection	Seal material (O-ring)	Item no.
10	True union Ø 16 mm	FKM	142 413
		EPDM	142 416
	Threaded port G 3/8	FKM	142 414
		EPDM	142 417
13	True union Ø 20 mm	FKM	142 419
		EPDM	142 422
	Threaded port G 1/2	FKM	142 420
		EPDM	142 423




**Note:** 2 connection kits are required for 1 valve

A wide selection of further cable plugs is available (see special data sheets type 2506 and 2510)

## Ordering chart for Cable plug

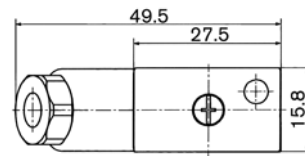
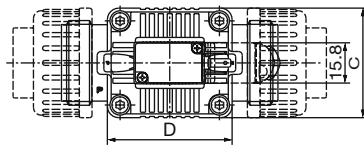
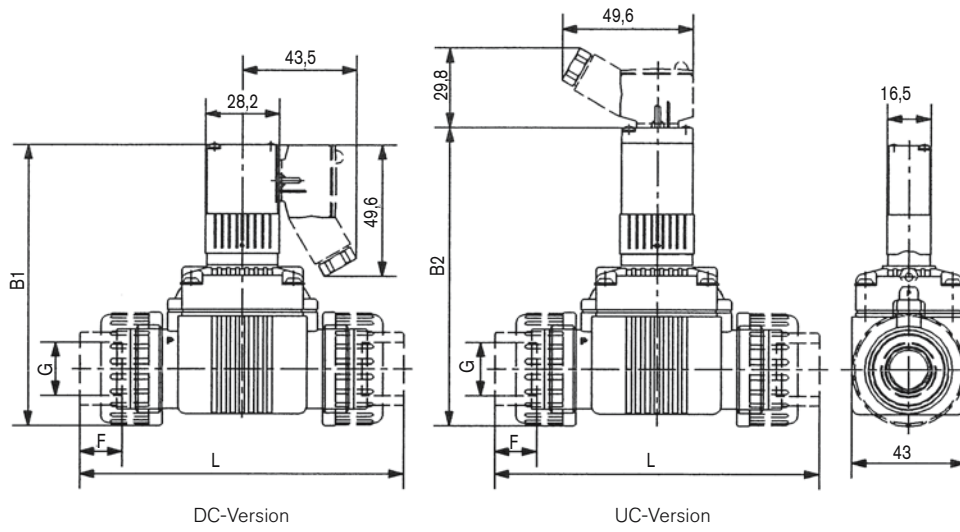
**Cable plug Type 2506 acc. to DIN EN 175301-803 Form C, with flat seal and fixing screw, without cable**

	Voltage	Current rating	Item no. without cable
<b>Without circuitry</b>			
	0 to 250 V/AC/DC	max. 3 A	008 353

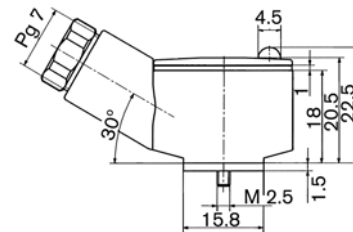
### Other accessories on request

- Multiple manifolds
- Fittings and hoses (also see Type 1013-AA 05)
- Special electronics to shorten the response time

Dimensions [mm]



Cable plug type 2506  
DIN EN 175301-803  
(previously DIN 43650),  
form C, (0-250 V AC/DC)



Orifice DN mm	Measurements Threaded Conn.				Measurements True Union				Measurements Hose Conn.				Measurements								
	G1 Port Conn. [inch]	E Thread depth [mm]	F1 [mm]	L [mm]	E [mm]	F [mm]	G [mm]	L [mm]	E [mm]	F [mm]	G [mm]	L [mm]	A [mm]	B [mm]	C [mm]	D [mm]	H [mm]	K [mm]	I [mm]		
10	G 3/8	17.0	13.0	107.0	17.0	14.0	16.2	107.0	42.0	32.0	14.0	157.0	78.5	96.0	32.0	32.0	10.5	35.0	73.0		
13	G 1/2	19.0	13.0	123.0	19.0	16.0	20.2	123.0	43.0	32.0	16.0	171.0	85.0	106.5	43.0	49.0	15.0	43.0	85.0		

To find your nearest Bürkert facility, click on the orange box →

[www.burkert.com](http://www.burkert.com)

In case of special application conditions,  
please consult for advice.

We reserve the right to make technical  
changes without notice.

0804/1\_EU-en\_00891771